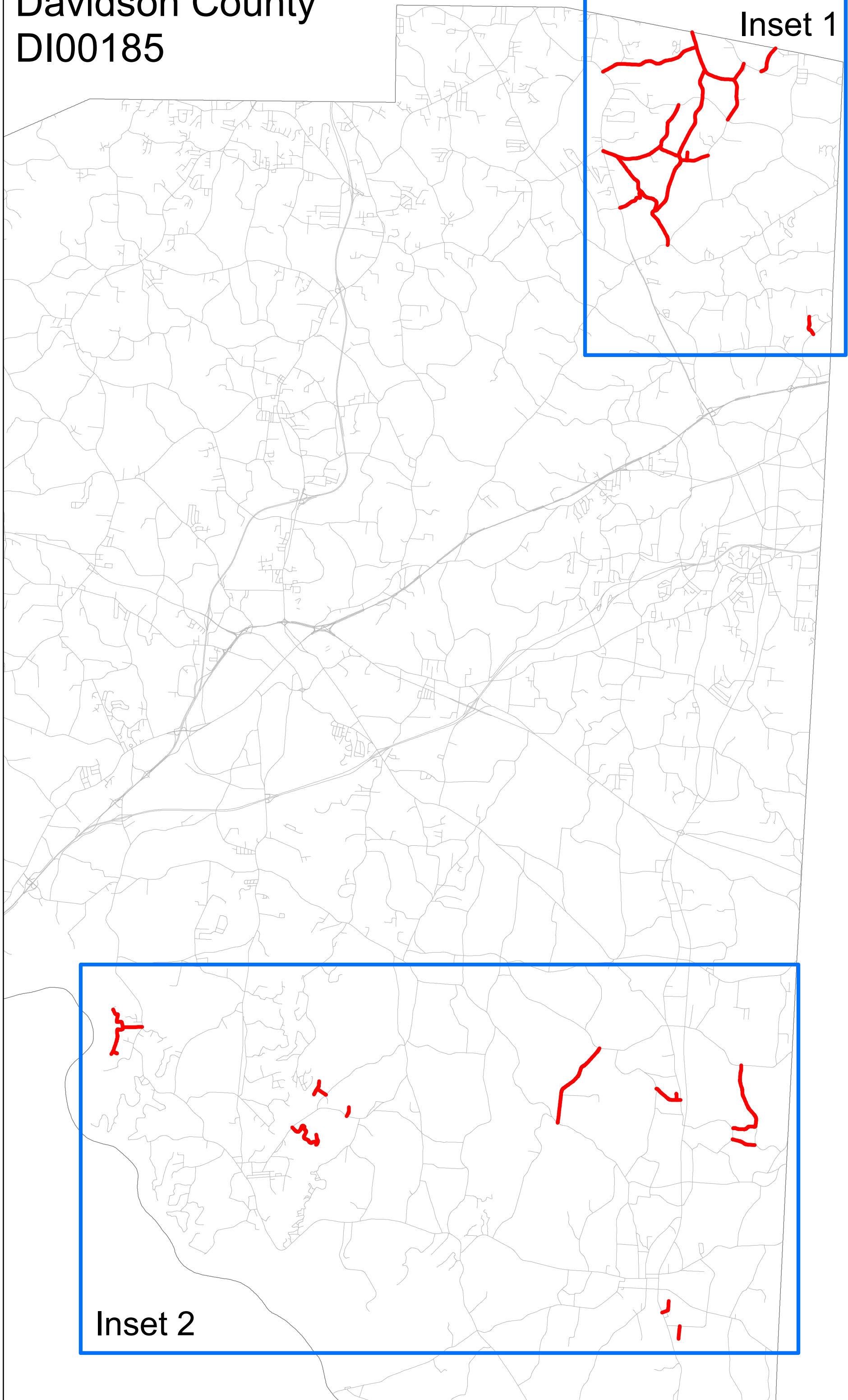


DI00185 - Davidson Co. AST Map List

Contract Number	WBS	Map Number	County	Route	Begin MP	To MP	From	To	Length	Width	Treatment	Map SY
DI00185	2018CPT.09.11.20292	1	029-Davidson	SR 1334 - Riverview Rd.	0.00	0.41	SR 1396 Linwood Southmont Rd.	SR 1335 Riverview Blvd	0.41	20	Seal - Double and Fog Seal	4,811
DI00185	2018CPT.09.11.20292	2	029-Davidson	SR 1335 - Riverview Blvd	0.00	1.25	EOM	EOM	1.25	20	Seal - Double and Fog Seal	14,667
DI00185	2018CPT.09.11.20292	3	029-Davidson	SR 1733 - Abbotts Creek Ch. Rd.	0.00	1.21	SR 1743 Browntown Rd.	SR 1734 Georgetown Rd.	1.21	18	Seal - Double and Fog Seal	12,799
DI00185	2018CPT.09.11.20292	4	029-Davidson	SR 1733 - Georgetown Rd.	1.21	3.38	SR 1734 Abbotts Creek Ch. Rd.	NC 109	2.16	18	Seal - Double and Fog Seal	22,841
DI00185	2018CPT.09.11.20292	5	029-Davidson	SR 1734 - Abbotts Creek Ch. Rd.	0.00	0.33	Forsyth Co	SR 1733 Abbotts Creek Ch. Rd.	0.33	18	Seal - Double and Fog Seal	3,474
DI00185	2018CPT.09.11.20292	6	029-Davidson	SR 1736 - Barney Rd.	0.00	0.62	SR 1735 Curry Rd.	CO/LINE	0.62	20	Seal - Double and Fog Seal	7,228
DI00185	2018CPT.09.11.20292	7	029-Davidson	SR 1743 - Abbotts Creek Ch. Rd.	1.85	2.77	SR 1741 Walburg Highpoint Rd.	SR 1733 Abbotts Creek Ch. Rd.	0.93	18	Seal - Double and Fog Seal	9,779
DI00185	2018CPT.09.11.20292	8	029-Davidson	SR 1743 - Browntown Rd.	2.77	3.19	SR 1733 Abbotts Creek Ch. Rd	SR 1735 Curry Rd	0.41	18	Seal - Double and Fog Seal	4,361
DI00185	2018CPT.09.11.20292	9	029-Davidson	SR 1744 - Mock Rd.	0.00	3.37	SR 1755 Lexington Ave Ext.	SR 1733 Abbotts Creek Ch. Rd.	3.37	18	Seal - Double and Fog Seal	35,556
DI00185	2018CPT.09.11.20292	10	029-Davidson	SR 1745 - Moore Rd.	0.00	0.61	SR 1743 Abbotts Creek Ch. Rd.	SR 1744 Mock Rd.	0.61	18	Seal - Double and Fog Seal	6,410
DI00185	2018CPT.09.11.20292	11	029-Davidson	SR 1746 - N. Clodfelter Rd.	0.00	1.02	SR 1741 Walburg Highpoint Rd.	SR 1747 N. Clodfelter Rd.	1.02	20	Seal - Double and Fog Seal	11,968
DI00185	2018CPT.09.11.20292	12	029-Davidson	SR 1746 - Willie Bodenhiemer Rd.	1.02	1.49	SR 1747 N. Clodfelter Rd.	SR 1744 Mock Rd.	0.47	20	Seal - Double and Fog Seal	5,456
DI00185	2018CPT.09.11.20292	13	029-Davidson	SR 1747 - N. Clodfelter Rd.	0.00	0.99	SR 1746 N. Clodfelter Rd.	SR 1755 Johnson Rd.	0.99	20	Seal - Double and Fog Seal	11,663
DI00185	2018CPT.09.11.20292	14	029-Davidson	SR 1753 - Jessie Green Rd.	0.00	0.66	SR 1755 Johnson Rd.	NC 109	0.66	20	Seal - Double and Fog Seal	7,756
DI00185	2018CPT.09.11.20292	15	029-Davidson	SR 1755 - Johnson Rd.	0.00	2.72	NC 109	SR 1756 Old Greensboro Rd.	2.72	18	Seal - Double and Fog Seal	28,723
DI00185	2018CPT.09.11.20292	16	029-Davidson	SR 1927 - Garcia Kennedy Rd.	0.00	0.42	NC 68	EOM	0.42	20	Seal - Double and Fog Seal	4,916
DI00185	2018CPT.09.11.20292	17	029-Davidson	SR 1944 - Park Dr.	0.00	0.17	SR 1745 Moore Rd.	EOM	0.17	18	Seal - Double and Fog Seal	1,795
DI00185	2018CPT.09.11.20292	18	029-Davidson	SR 2321 - Frank Rd.	0.00	1.92	SR 2318 Regan Rd.	NC 47	1.92	20	Seal - Double and Fog Seal	22,575
DI00185	2018CPT.09.11.20292	19	029-Davidson	SR 2323 - Hays Harris Rd	0.00	0.61	SR 2416	SR 2320 Tysinger Rd.	0.61	20	Seal - Double and Fog Seal	7,099
DI00185	2018CPT.09.11.20292	20	029-Davidson	SR 2326 - Crousetown Rd.	0.41	1.81	SR 2327 Crousetown Rd.	SR 2318 Cid Rd.	1.40	16	Seal - Double and Fog Seal	13,151
DI00185	2018CPT.09.11.20292	21	029-Davidson	SR 2327 - Crousetown Rd.	0.00	0.50	SR 2326 Garner Rd.	SR 2330 Cedar Springs Rd.	0.50	16	Seal - Double and Fog Seal	4,684
DI00185	2018CPT.09.11.20292	22	029-Davidson	SR 2329 - Beck Rd.	0.00	0.50	SR 2330 Crousetown Rd.	SR 2326 John Beck Rd.	0.50	14	Seal - Double and Fog Seal	4,107
DI00185	2018CPT.09.11.20292	23	029-Davidson	SR 2402 - High Rock Shores	0.00	0.98	SR 2294 Holloways Ch. Rd.	SR 2499 High Rock Drive	0.98	20	Seal - Double and Fog Seal	11,499
DI00185	2018CPT.09.11.20292	24	029-Davidson	SR 2497 - Eugene Court	0.00	0.14	SR 2323 Hays Harris Rd.	EOM	0.14	20	Seal - Double and Fog Seal	1,643
DI00185	2018CPT.09.11.20292	25	029-Davidson	SR 2499 - High Rock Drive	0.00	0.24	EOM	EOM	0.24	20	Seal - Double and Fog Seal	2,793
DI00185	2018CPT.09.11.20292	26	029-Davidson	SR 2513 - Bill Carrol Rd.	0.00	0.33	NC 109	EOM	0.33	20	Seal - Double and Fog Seal	3,872
DI00185	2018CPT.09.11.20292	27	029-Davidson	SR 2571 - Astran Dr.	0.00	0.28	SR 2559	EOM	0.28	20	Seal - Double and Fog Seal	3,227
DI00185	2018CPT.09.11.20292	28	029-Davidson	SR 3164 - Lakewood Court	0.00	0.10	SR 1335 Riverview Blvd	EOM	0.10	20	Seal - Double and Fog Seal	1,150
DI00185	2018CPT.09.11.20292	29	029-Davidson	SR 3302 - Buddle Dr.	0.00	0.20	SR 2294 Holloways Ch. Rd.	EOM	0.20	20	Seal - Double and Fog Seal	2,382
DI00185	2018CPT.09.11.20292	30	029-Davidson	SR 3325 - Capistrano Shores Blvd.	0.00	0.23	SR 2380 Palmer Rd.	SR 3326 Capistrano Shores	0.23	20	Seal - Double and Fog Seal	2,652
DI00185	2018CPT.09.11.20292	31	029-Davidson	SR 3326 - Capistrano Shores	0.00	0.31	EOM	EOM	0.31	18	Seal - Double and Fog Seal	3,305

Total Map Area (SY) 278,342
 Total Map Length (mi.) 25.47

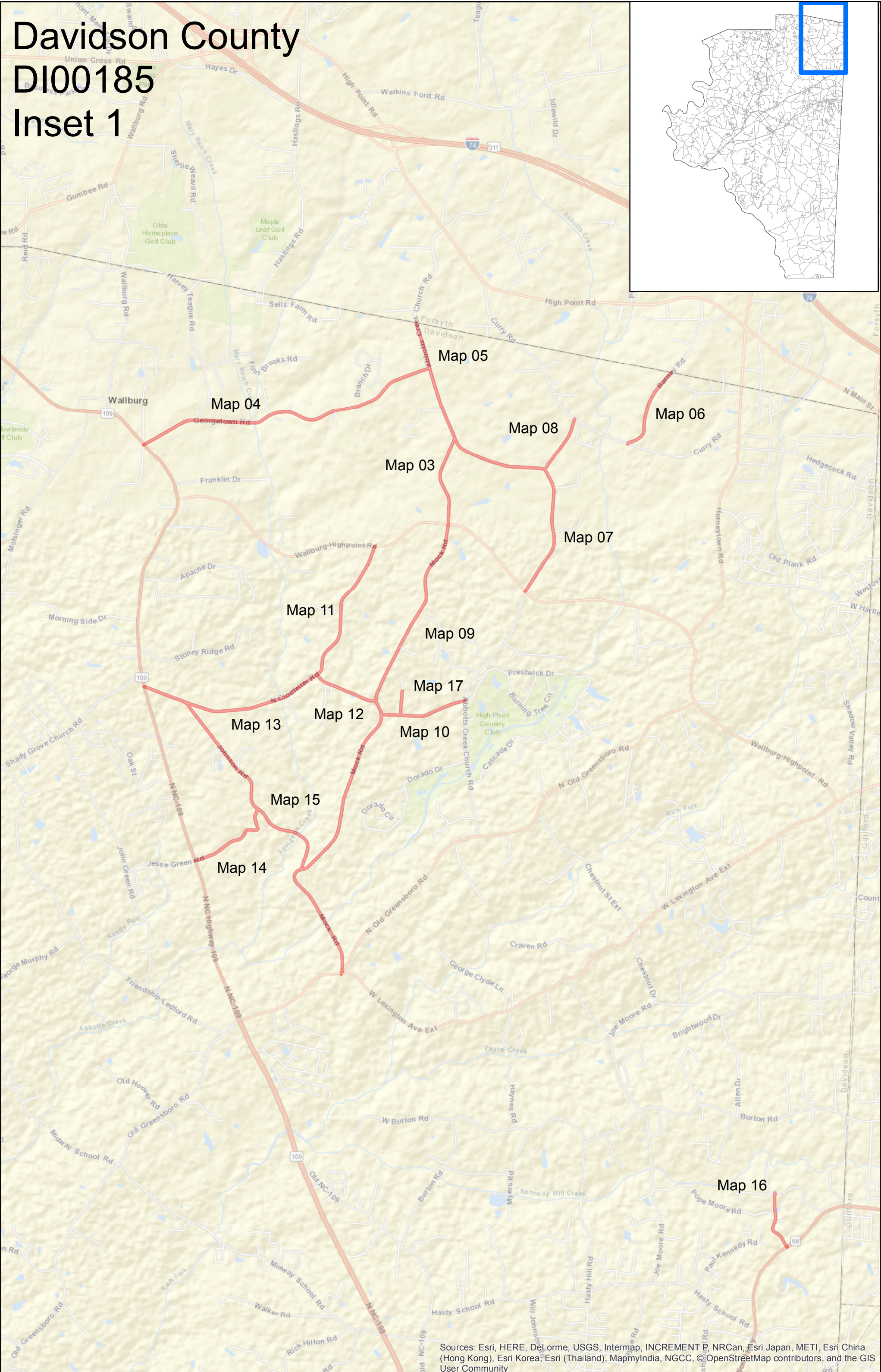
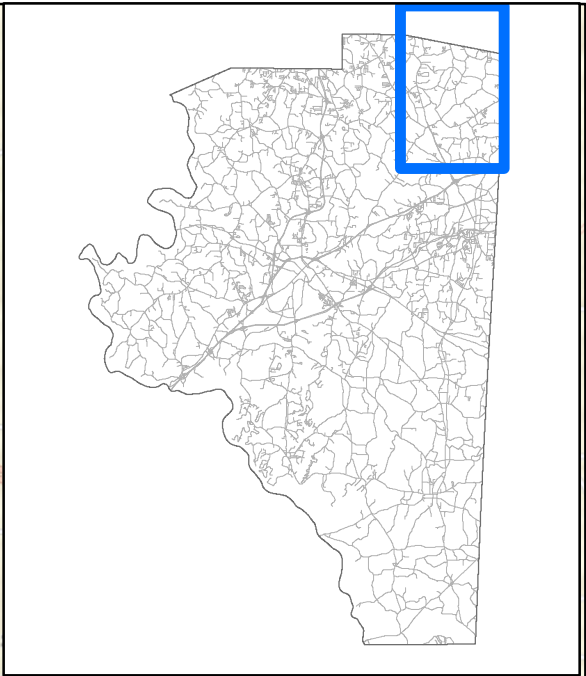
Davidson County DI00185



Davidson County

DI00185

Inset 1



Sources: Esri, HERE, DeLorme, USGS, Intermap, INCREMENT P, NRCan, Esri Japan, METI, Esri China (Hong Kong), Esri Korea, Esri (Thailand), MapmyIndia, NGCC, © OpenStreetMap contributors, and the GIS User Community

Davidson County
DI00185
Inset 2

